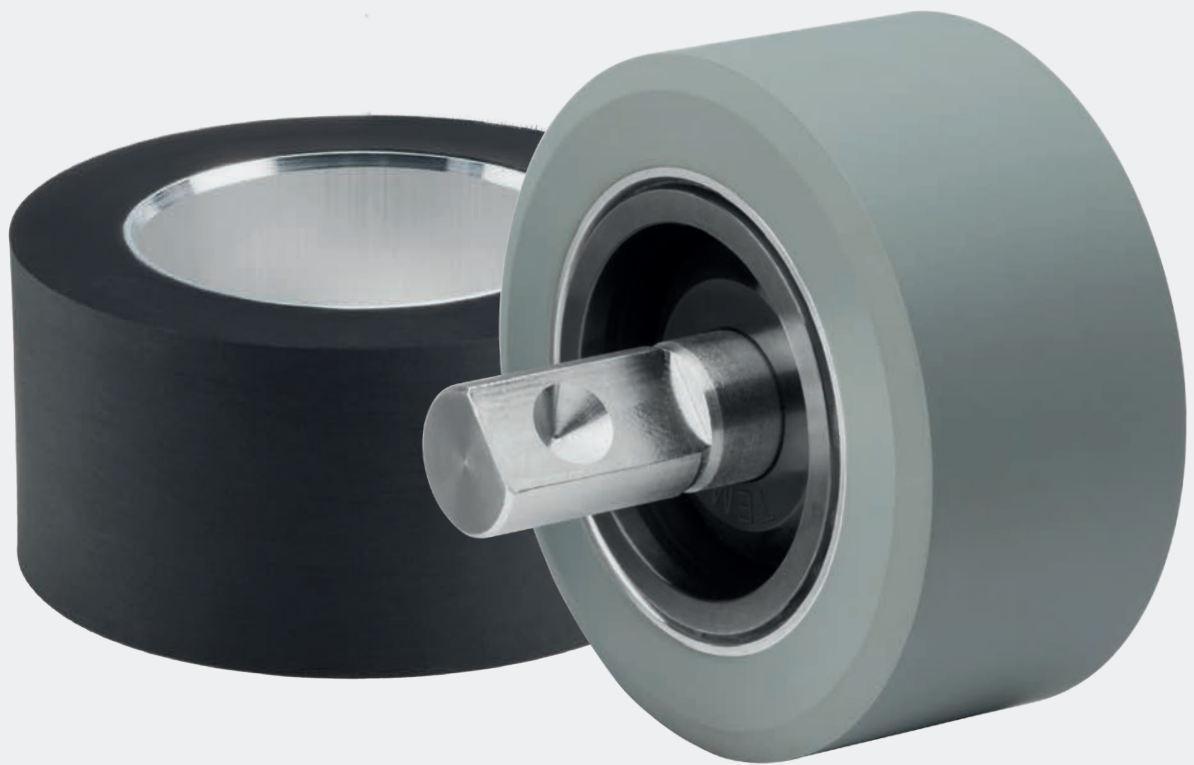


Nip Rollers LR

Types, Sizes, Surfaces

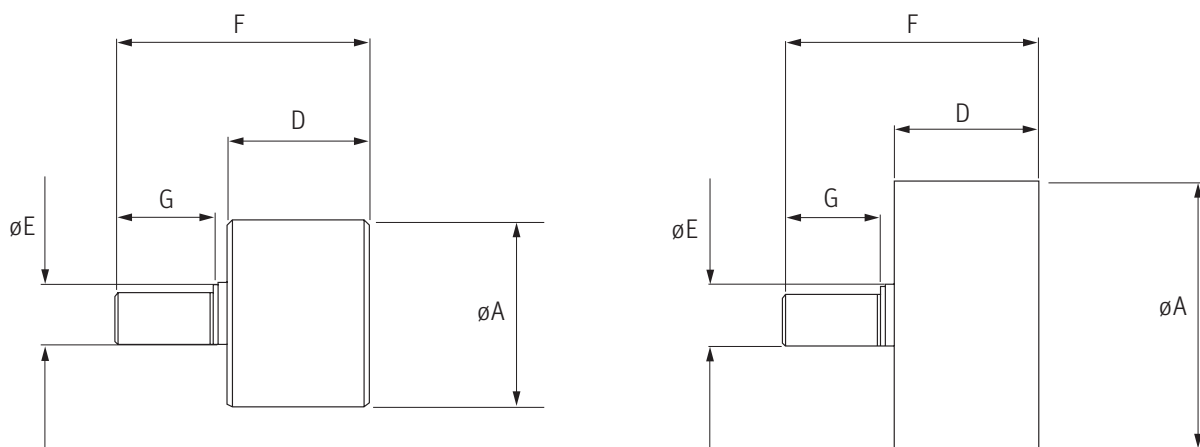


Your benefits:

- Vibration free smooth running
- Long lifetime without lubrication
- Secure grip without any yarn slippage

Nip Roller LR

Figures and overview



Nip roller units are available for all current texturing machines. Due to the different constructions from e.g. the connection pin diameters of the Temco Nip Roller Bearing and the varying diameters of the DAYTEX cots, we recommend to contact us for the specification of the type matching to your demands.

Key numeric system

LR7035-10. S. 301P

- S = Springloc, P = Pressfit
- B = Type 121 (black color and 70 ShoreA hardness)
- G = Type G-836 (gray color and 75 ShoreA hardness)
- S = Type S-880

Settings for different fabrics

Bearing	Niproller	Machine type	A	B	C	D	E	F	G
			45	35					
LR4535-10	LR6535-10. B. 301P	Oerlikon Barmag			65	35	15	62	24
	LR6535-10. G. 301P	Oerlikon Barmag			65	35	15	62	24
	LR6535-10. S. 301P	Oerlikon Barmag			65	35	15	62	24
	LR6535-10. G. 303P	Oerlikon Barmag			65	35	15	62	24
	LR6535-10. S. 303P	Oerlikon Barmag			65	35	15	62	24
	LR7035-10. B. 301P	Oerlikon Barmag			70	35	15	62	24
	LR7035-10. G. 301P	Oerlikon Barmag			70	35	15	62	24
	LR7035-10. S. 301P	Oerlikon Barmag			70	35	15	62	24
	LR7035-10. G. 303P	Oerlikon Barmag			70	35	15	62	24
	LR7035-10. S. 303P	Oerlikon Barmag			70	35	15	62	24

Rieter Components Germany GmbH

Temco
 Fuldaer Str. 19
 97762 Hammelburg
 Germany
 T +49 9732 87 0
 info@temco.de

The data and illustrations in this brochure and on the corresponding data carrier refer to the date of printing. Temco reserves the right to make any necessary changes at any time and without special notice. Temco products and Temco innovations are protected by patents.

3494-v1 en 2204